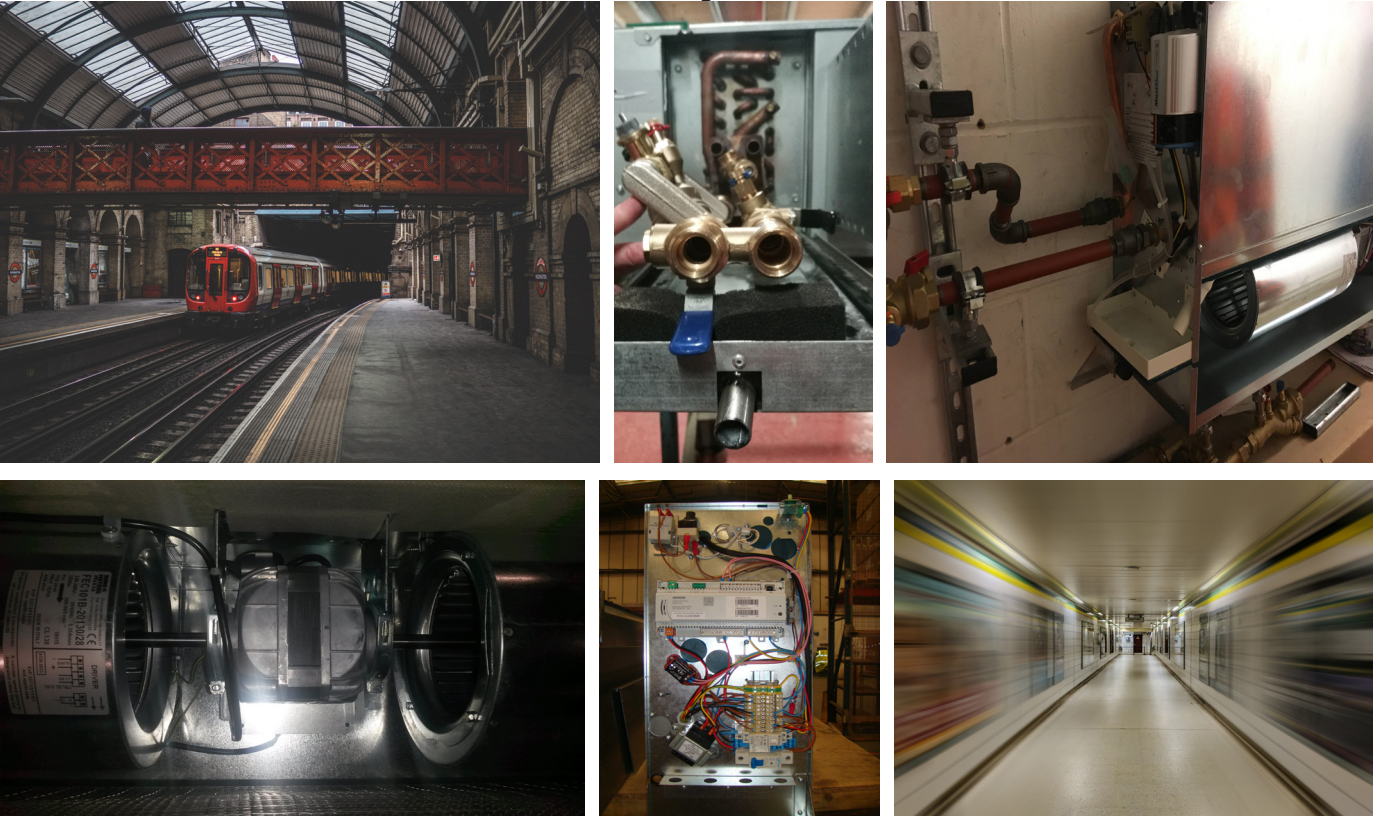


# QUARTZ

FAN COILS AND HVAC

## Crossrail - Paddington Station A 'Crossrail' compliant product development for a new railway infrastructure



The Crossrail network project has given London and the South East a new railway, improving journey times across London, to ease congestion and offer better connections. The Elizabeth line will provide easier, quicker and more direct travel opportunities across the capital.

The iconic Paddington Station is a Central London railway terminus and London Underground station complex, located in the Paddington area. The site has been the London terminus of services provided by the Great Western Railway and its successors since 1838.

Quartz design teams worked to the specifications of 'Crossrail' to develop new ducted and perimeter wall-mounted ranges of products, removing plastic components such as drain points and grilles, implementing LSZH (Low smoke zero halogen) cabling throughout, high specification insulation and providing an Axalta corrosion proof finish to all exposed units.

For our new Crossrail compliant products, delivery through the centre of London is only carried out by authorised carriers, with extra emphasis on protecting the many cyclists in the capital but as a whole for raising the safety requirements.